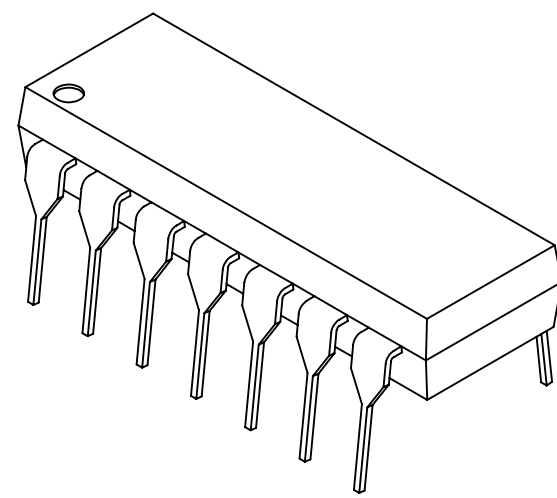
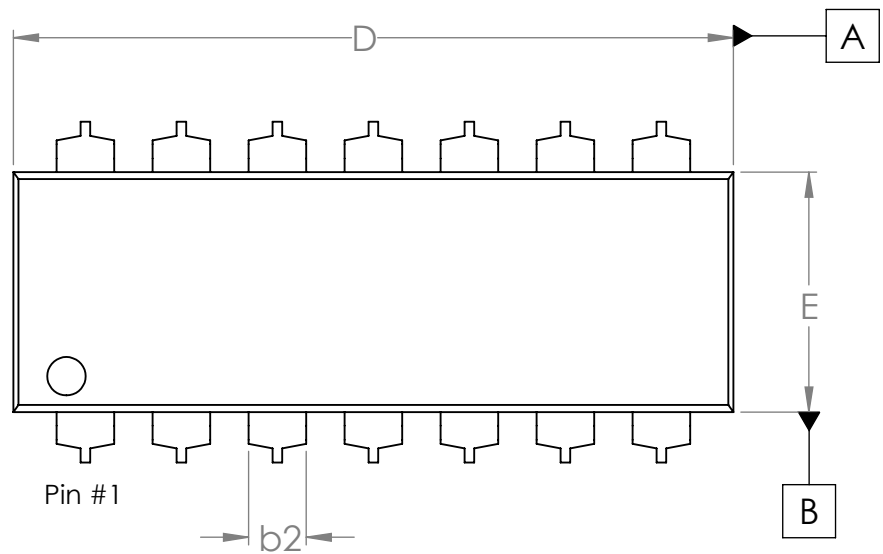


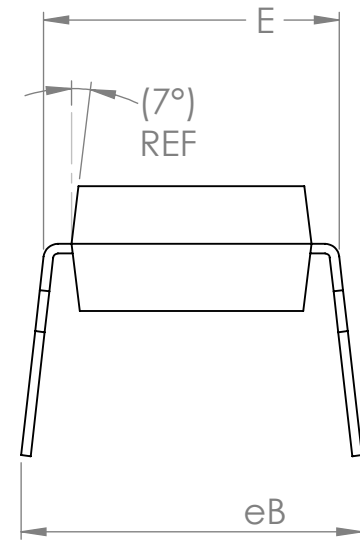
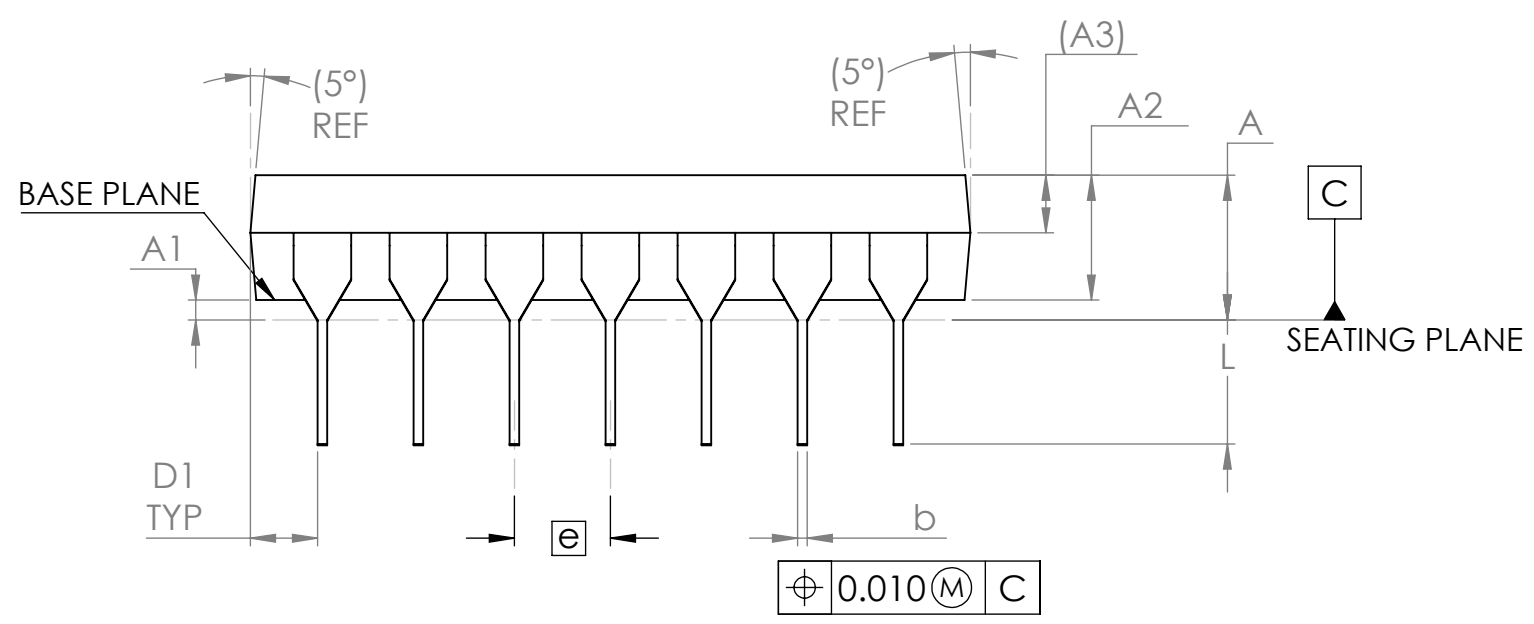
D

D



C

C



B

B

†

A

NOTES:  
 1. PACKAGE CONFORMS TO JEDEC MS-001, VARIATION AA.  
 2. DIM AND TOL CONFORM TO ASME Y14.5-2009.  
 3. ALL DIM ARE IN INCHES.  
 4. D AND E1 DIMENSIONS FOR PLASTIC PACKAGES DO NOT INCLUDE MOLD FLASH OF PROTRUSIONS. MOLD FLASH OR PROTRUSIONS SHALL NOT EXCEED 0.010 INCH.

SYMBOL	MIN	MAX	SYMBOL	MIN	MAX
A	-	0.210	E	0.300	0.325
A1	0.015	-	E1	0.240	0.280
A2	0.115	0.195	eB	0.345	0.365
A3	0.06 REF		L	0.115	0.200
b	0.014	0.022			
b2	0.045	0.070			
D	0.735	0.775			
D1	0.005	-			
e	0.100 BSC				

**PROMEX INDUSTRIES INC.**  
[www.promex-ind.com](http://www.promex-ind.com)

TITLE  
 14 LEAD PDIP-300 mils

DWG. NO.  
 14 Lead PDIP-300

DO NOT SCALE

FILE NAME:  
 14L-PDIP-300.PDF

REV  
**A**

SHEET  
 1 of 1